



South Bay Salt Pond Restoration Project

Restoring the Wild Heart of the South Bay



April 2008



September 2009



May 2010



October 2010

SALT POND A21 SOUTH BAY SALT POND RESTORATION PROJECT

Kite aerial photographs of a small channel in the northeast corner following the 2006 breach to tidal flow. Field of view is ~ 120 feet. . C. Benton

John Bourgeois, Executive Project Manager
South Bay Salt Pond Restoration Project

THE
Baylands
AND
Climate Change

WHAT WE CAN DO

BAYLANDS ECOSYSTEM HABITAT GOALS
SCIENCE UPDATE 2015



State of California
Coastal Conservancy





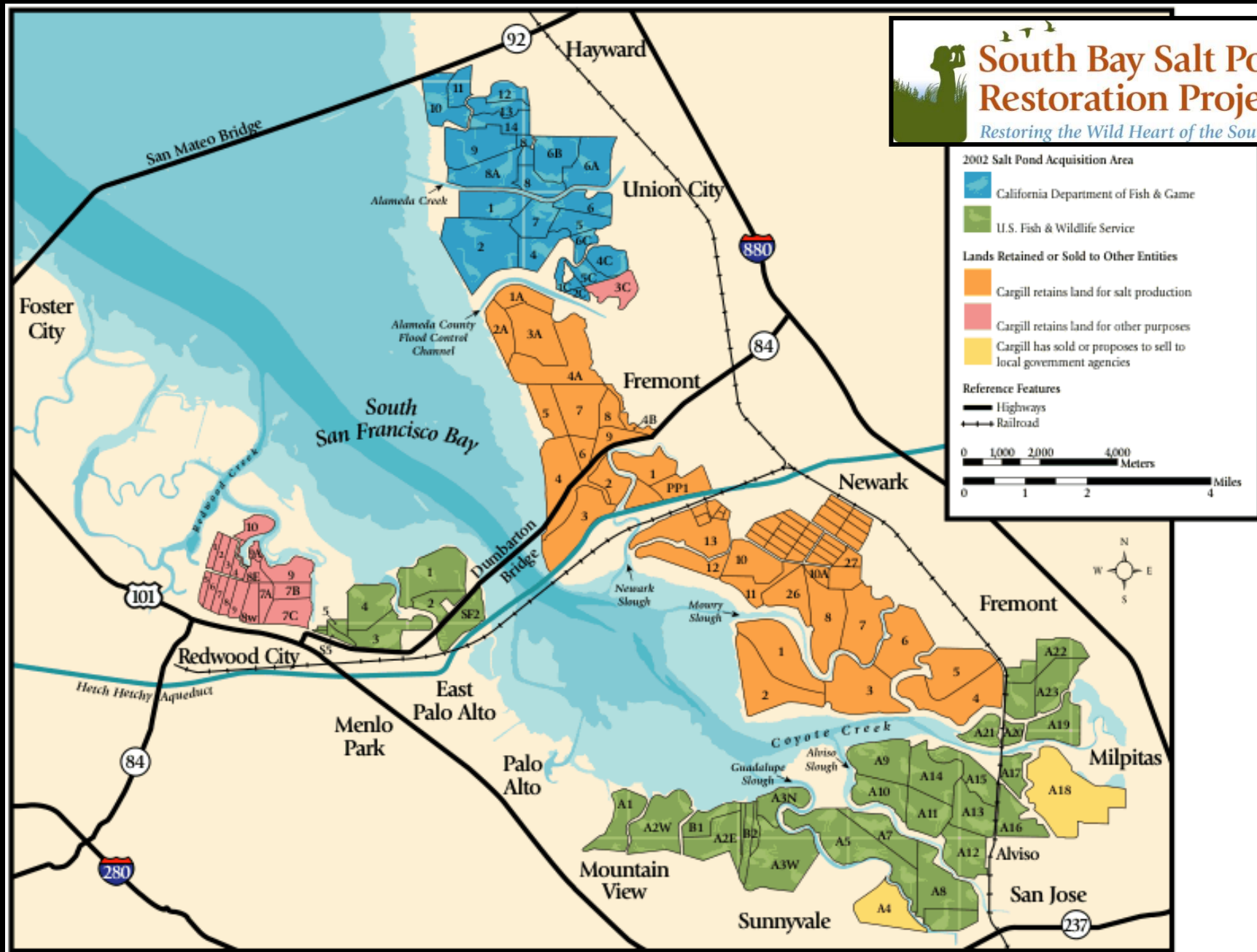
WHAT WE CAN DO

- *Restore complete systems, including processes*
- *Restore soon, in areas marshes are likely to persist*
- *Plan for the Baylands to migrate*



South Bay Salt Pond Restoration Project

Restoring the Wild Heart of the South Bay

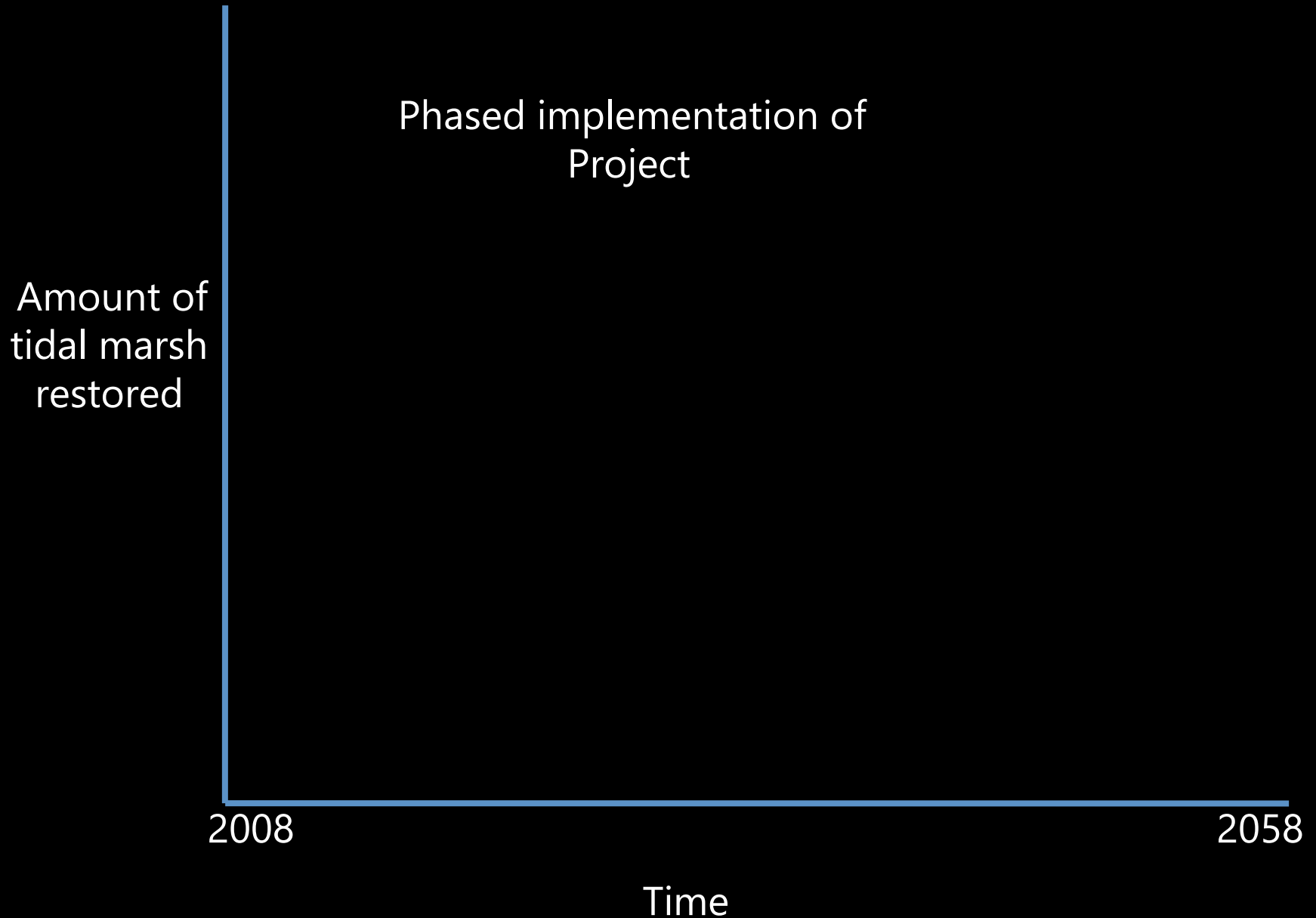


Key uncertainties

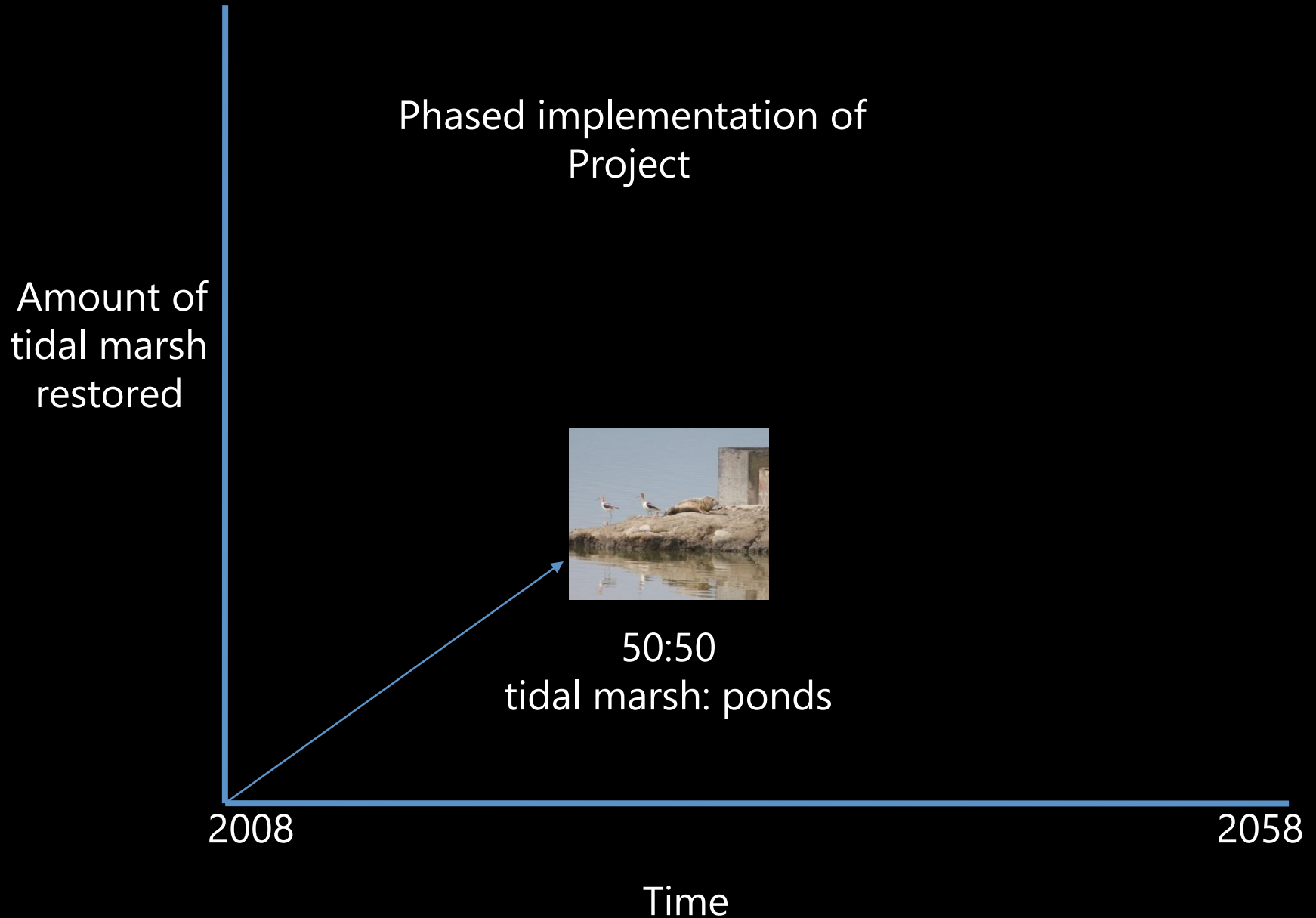
- ▮ Wildlife use of changing habitats
- ▮ Habitat evolution and sediment dynamics
- ▮ Mercury methylation
- ▮ Water quality
- ▮ Invasive species
- ▮ Public access
- ▮ Infrastructure support
- ▮ Sea level rise and climate change



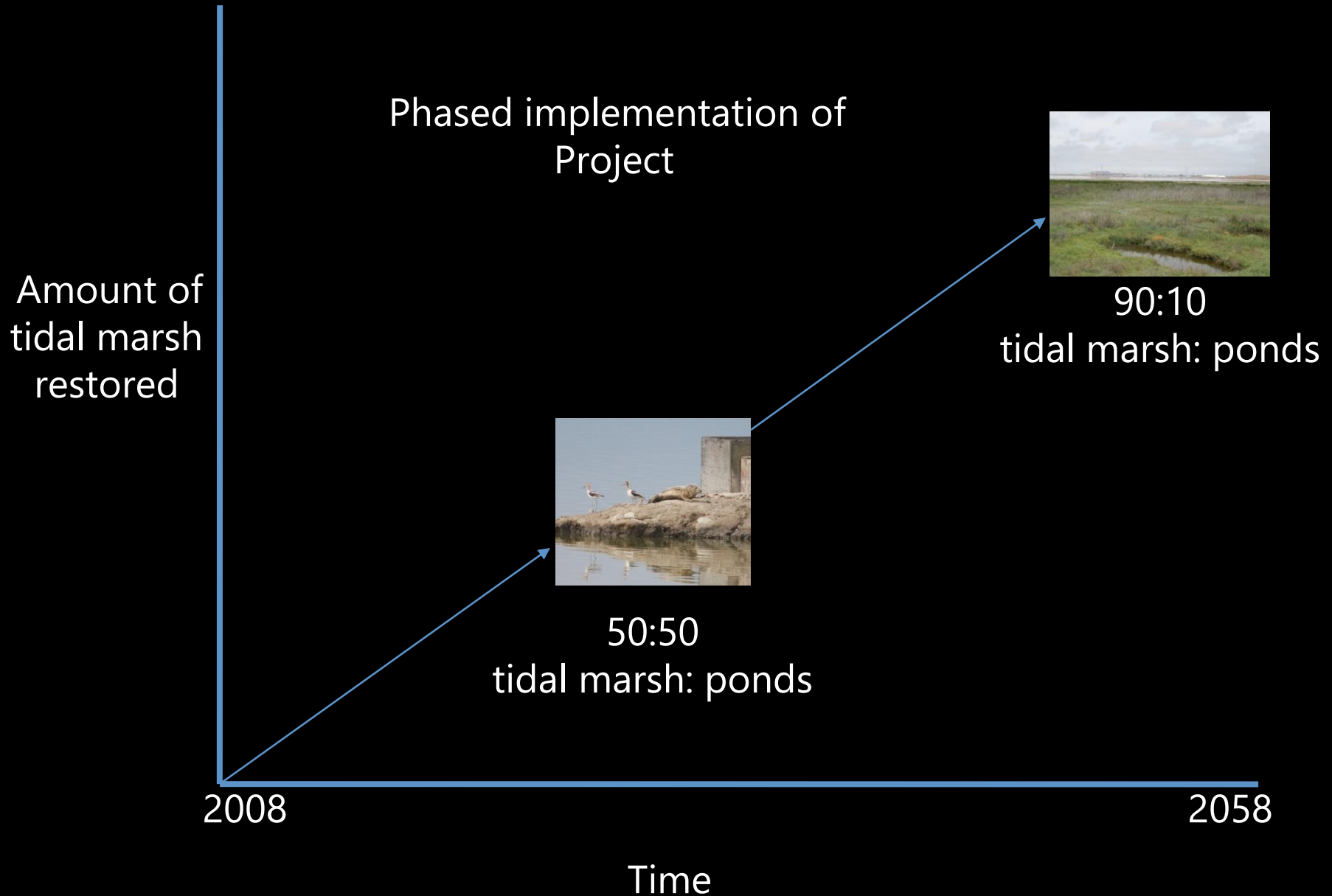
Adaptive Management Restoration



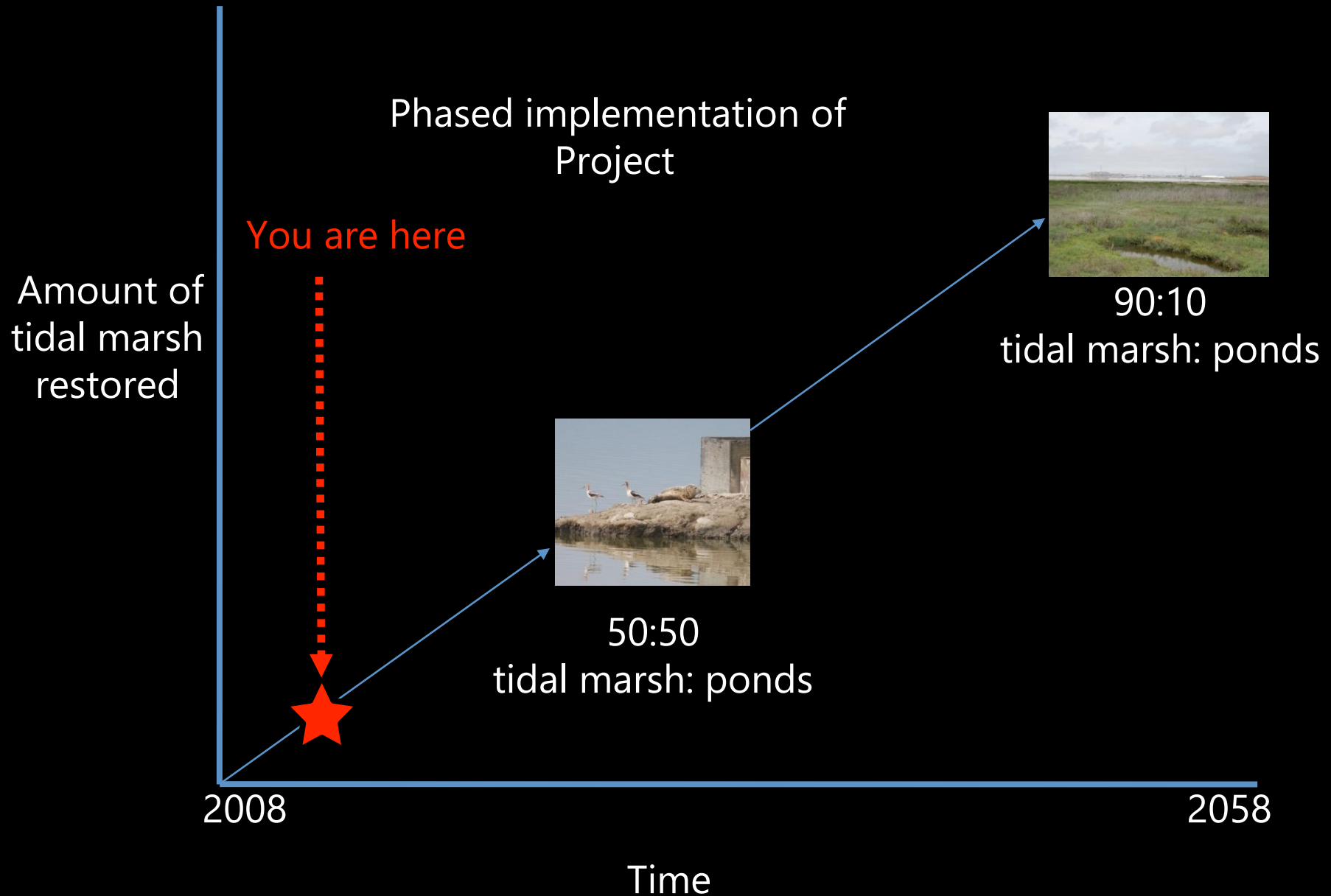
Adaptive Management Restoration



Adaptive Management Restoration

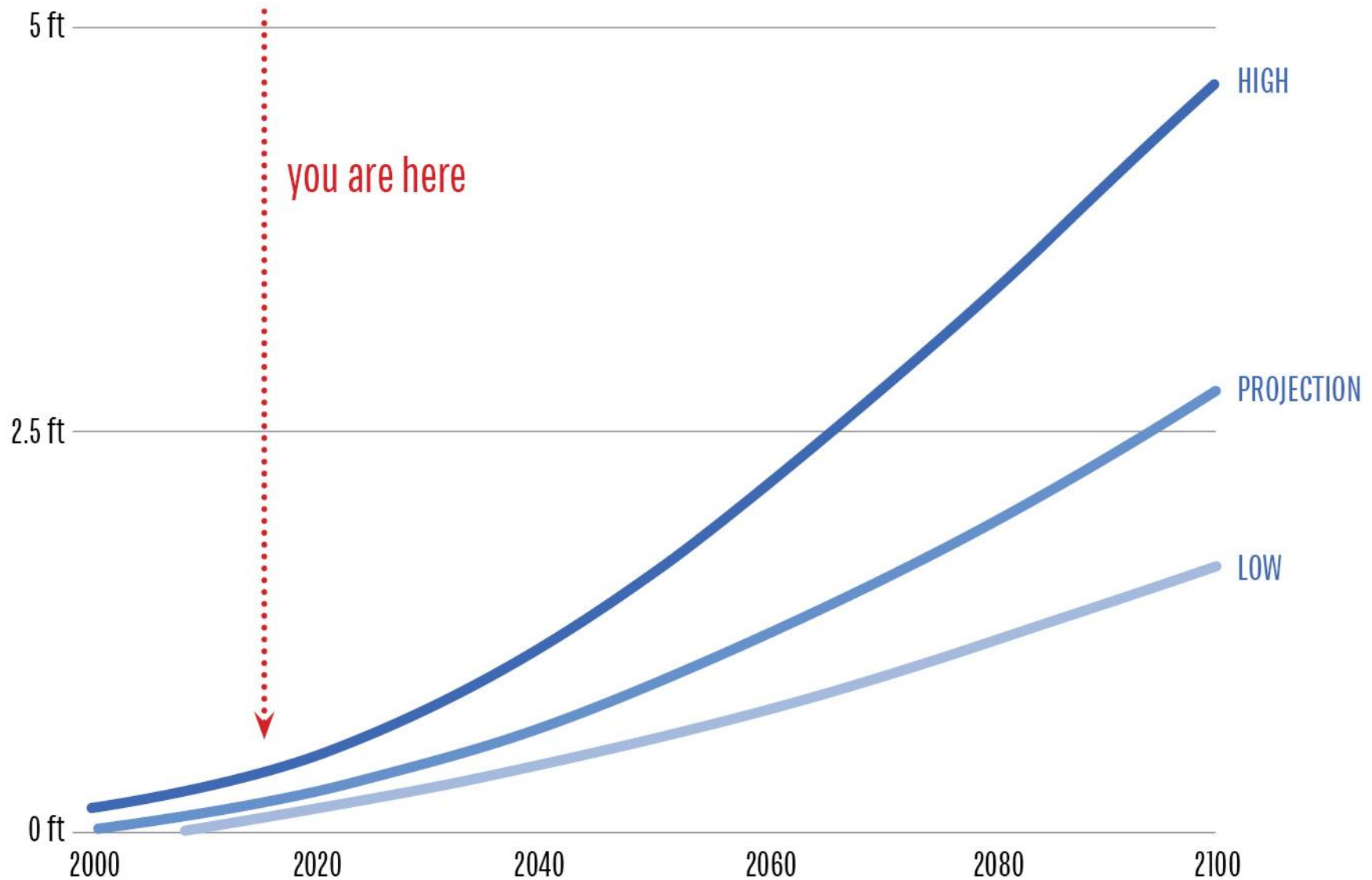


Adaptive Management Restoration



SEA LEVEL *rise* FOR CALIFORNIA

Courtesy NRC 2012





WHAT WE CAN DO

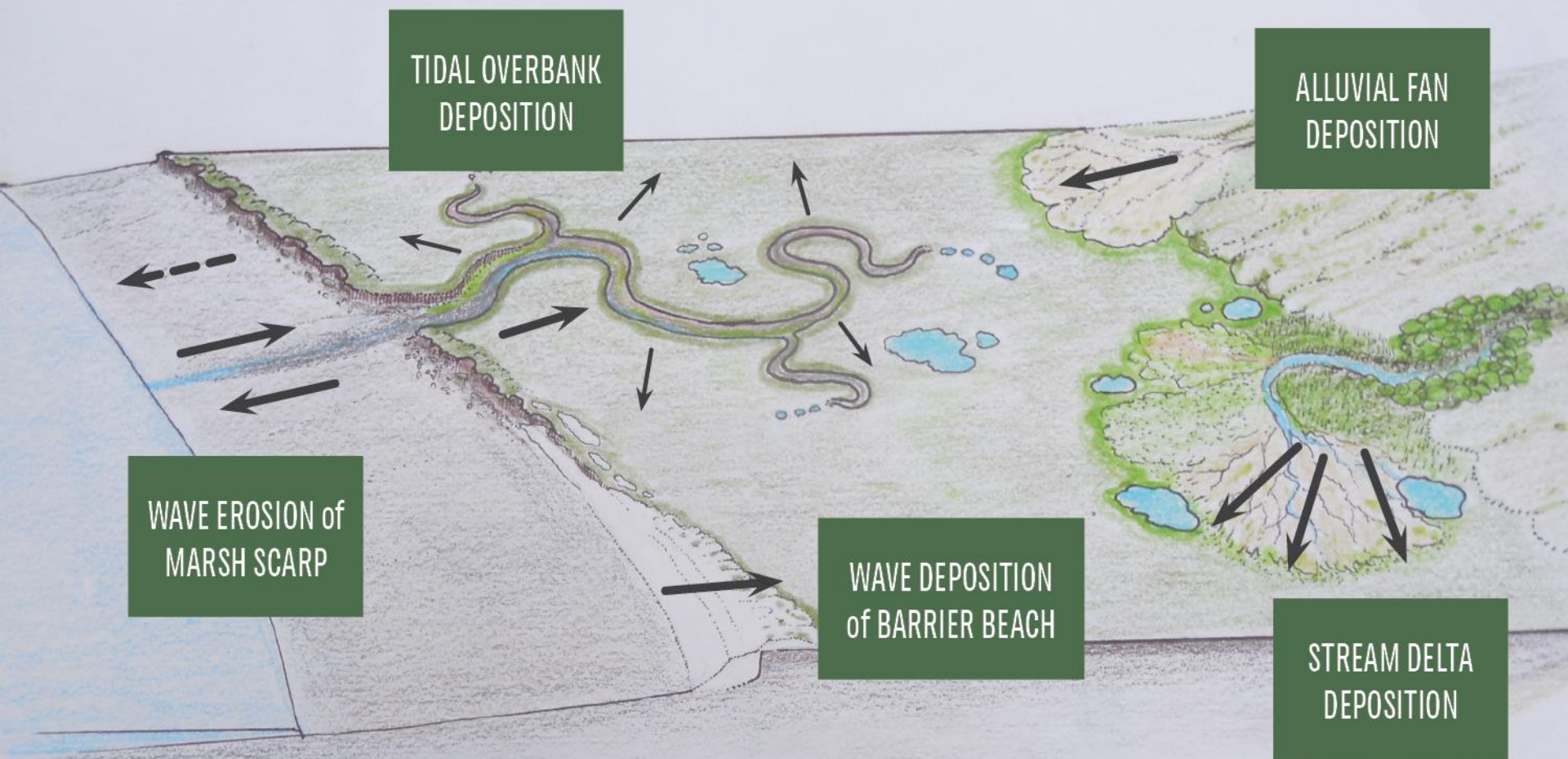
- *Restore complete systems, including processes*
- *Restore soon, in areas marshes are likely to persist*
- *Plan for the Baylands to migrate*

MEANS
RESTORING

PROCESSES

NOT JUST
PLACES

COURTESY PETER BAYE





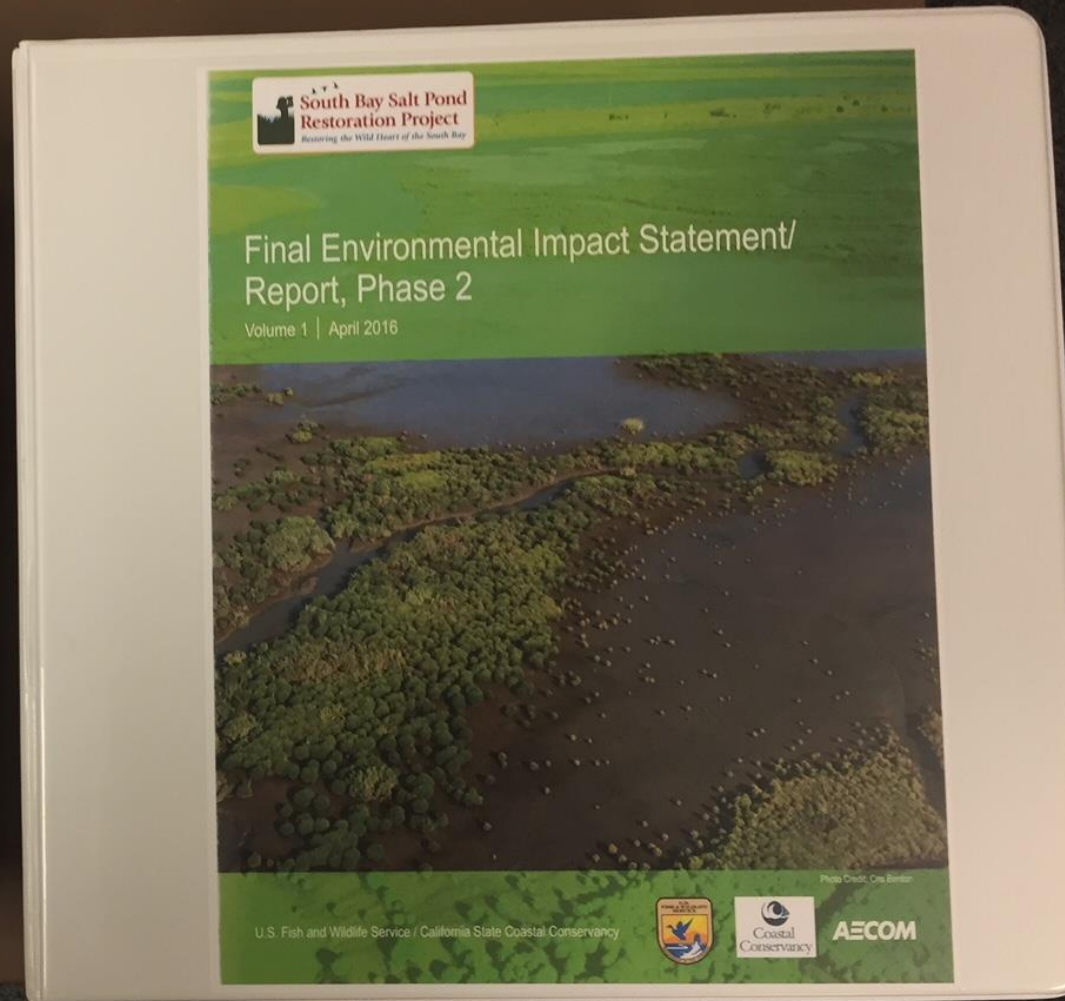
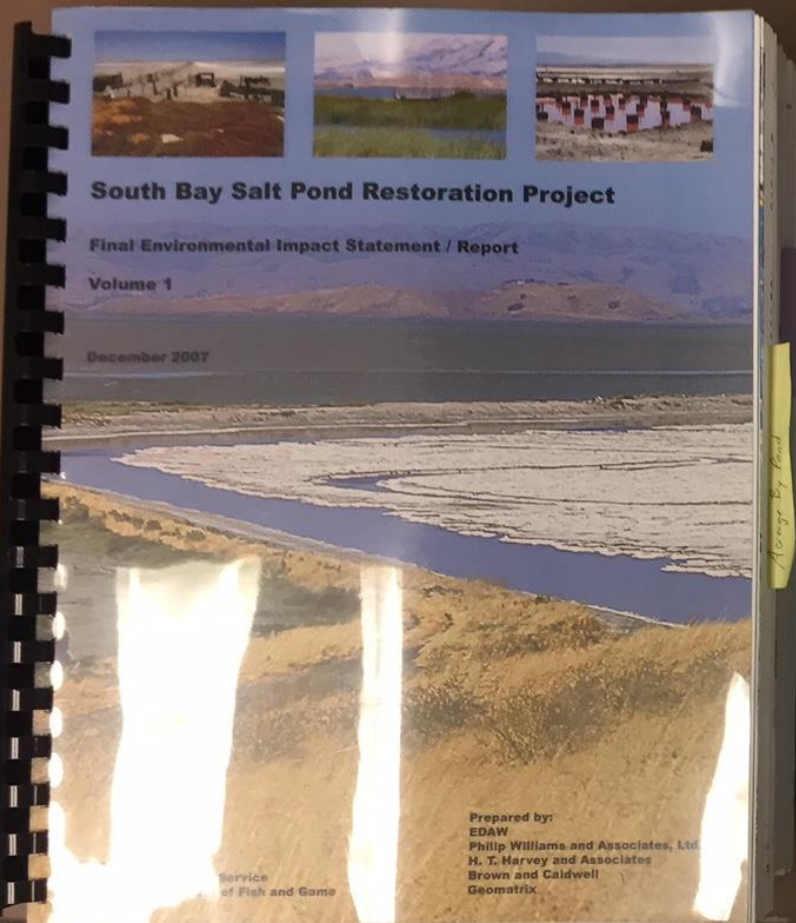


WHAT WE CAN DO

- *Restore complete systems, including processes*
- *Restore soon, in areas marshes are likely to persist*
- *Plan for the Baylands to migrate*

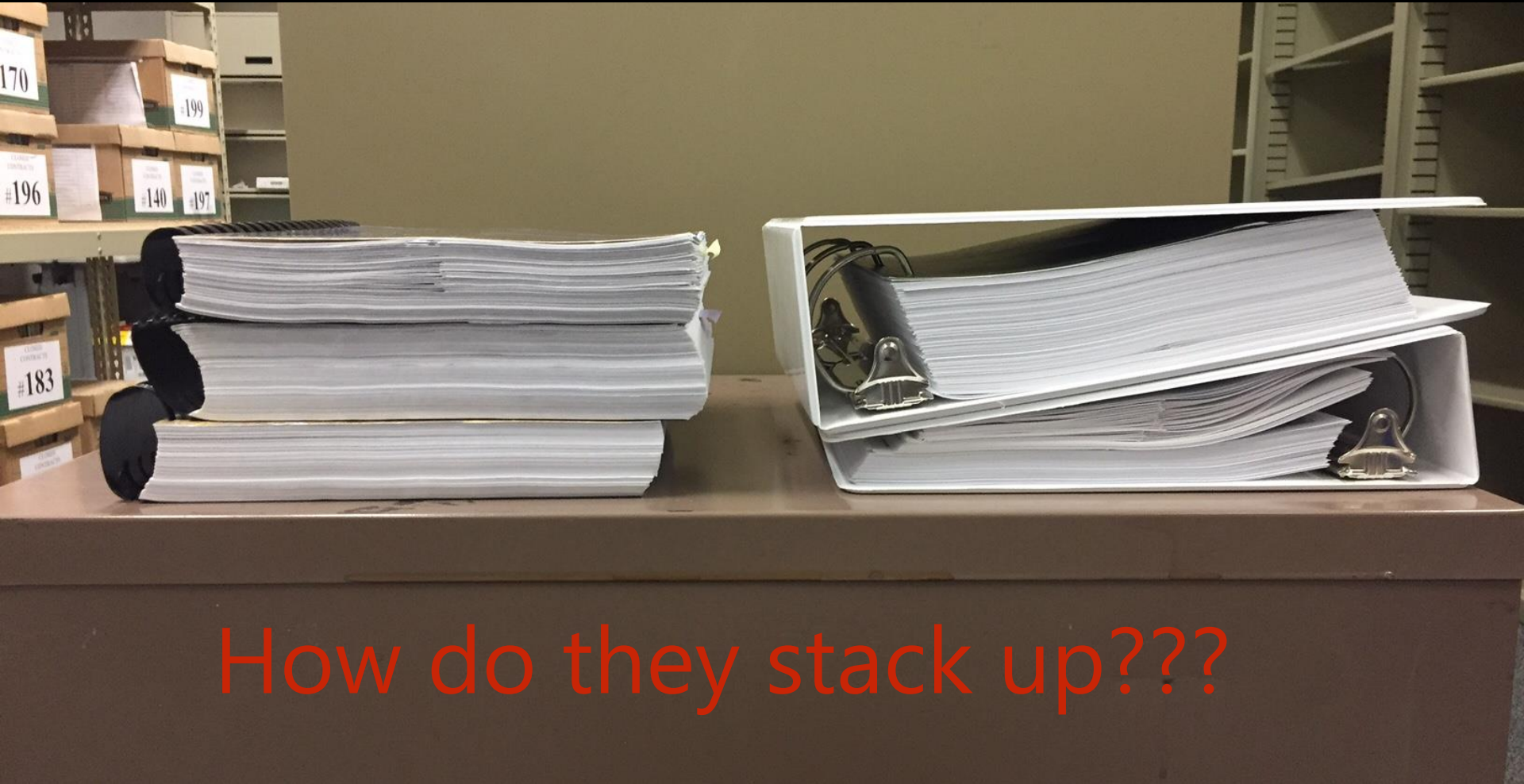
Programmatic + Phase
1 (7 projects) + AMP

Phase 2 (FWS, 4 projects)



Programmatic + Phase
1 (7 projects) + AMP

Phase 2 (FWS, 4 projects)



Programmatic + Phase
1 (7 projects) + AMP

Phase 2 (FWS, 4 projects)

4 1/2"

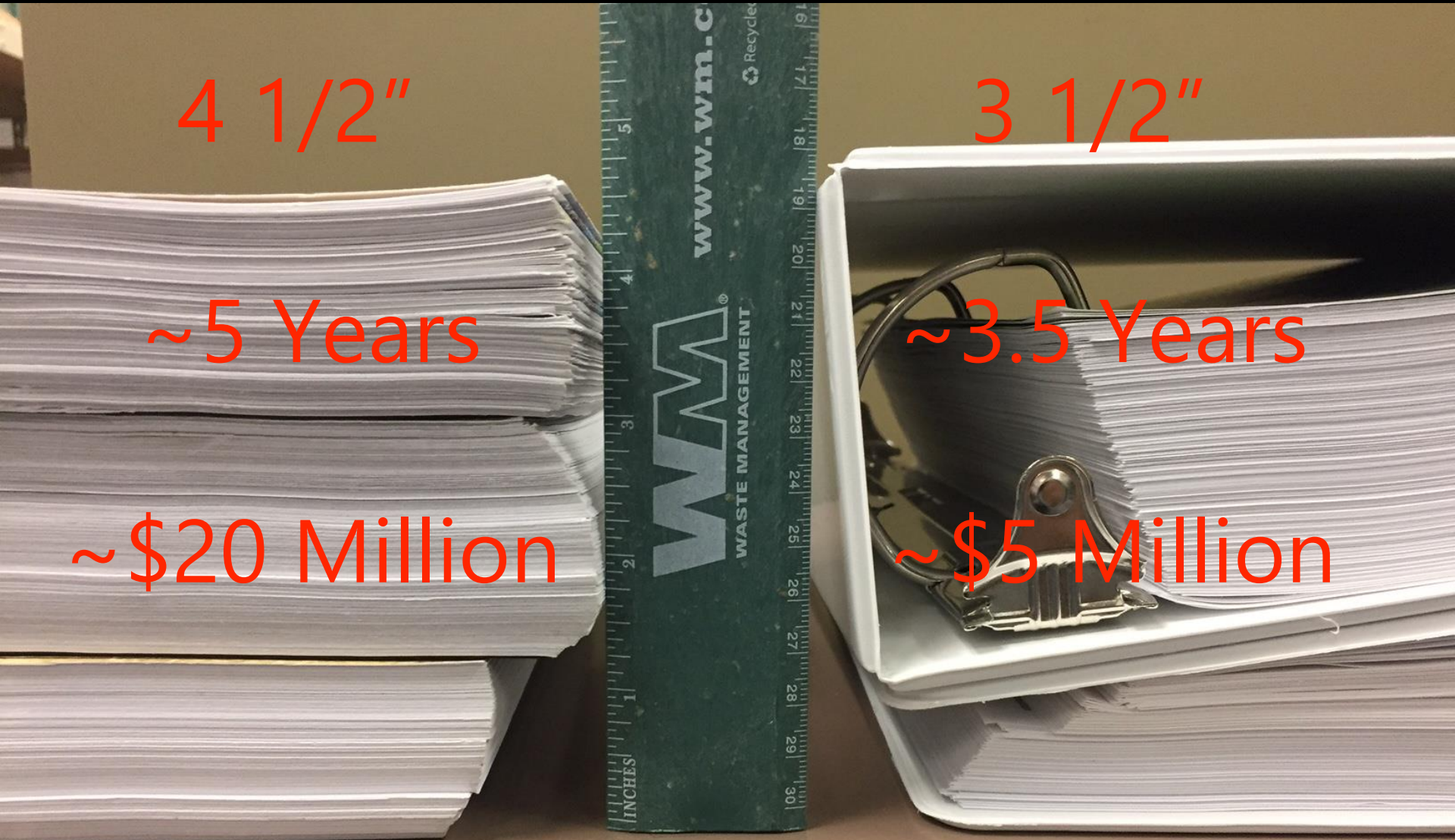
~5 Years

~\$20 Million

3 1/2"

~3.5 Years

~\$5 Million





WHAT WE CAN DO

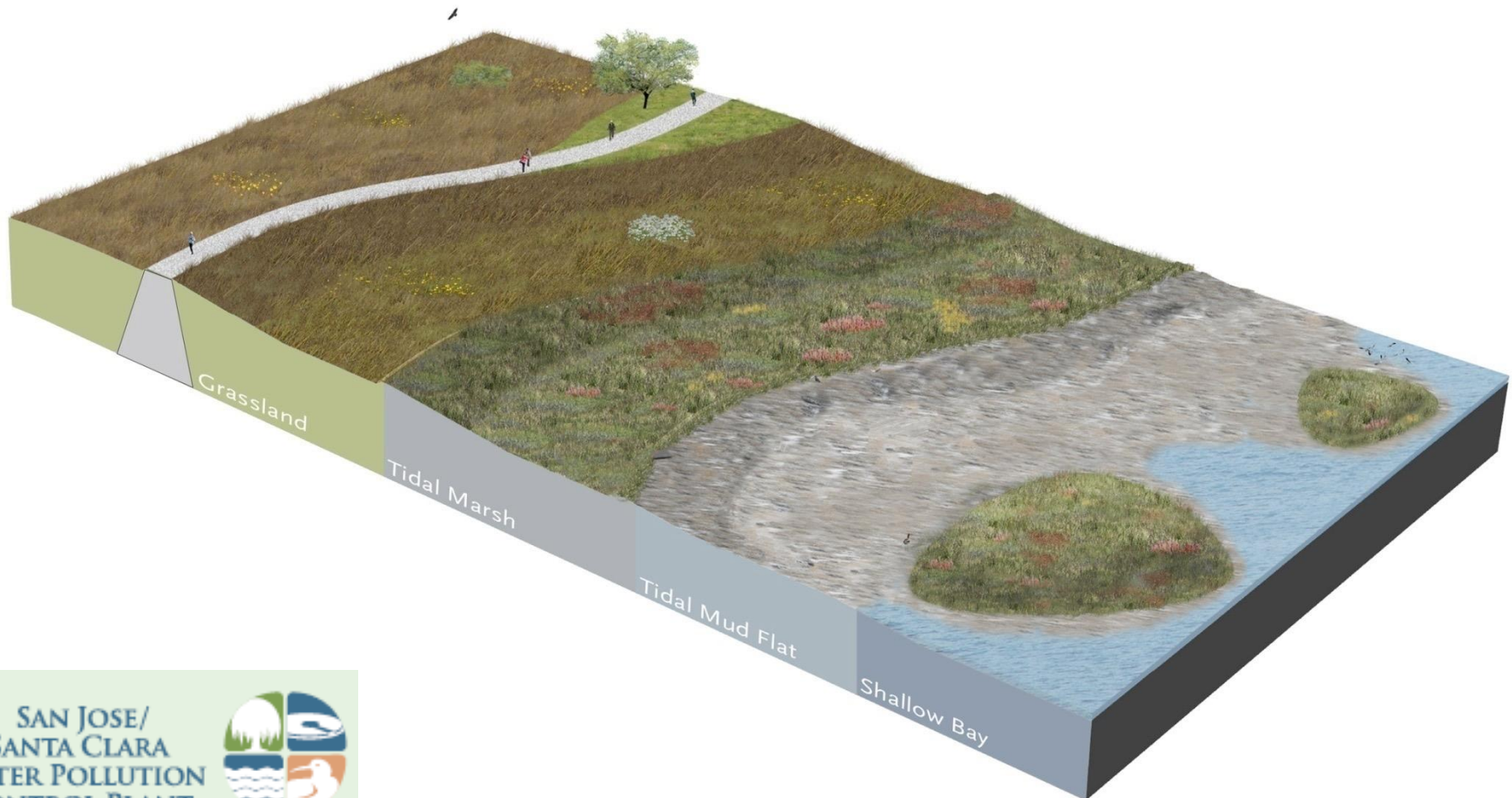
- *Restore complete systems, including processes*
- *Restore soon, in areas marshes are likely to persist*
- *Plan for the Baylands to migrate*

San Francisco Bay Today



Source: U.S. Army Corps of Engineers Digital Visual Library

“Horizontal” Levee



::: Hargreaves Associates :::

<http://thebayinstitute.org>

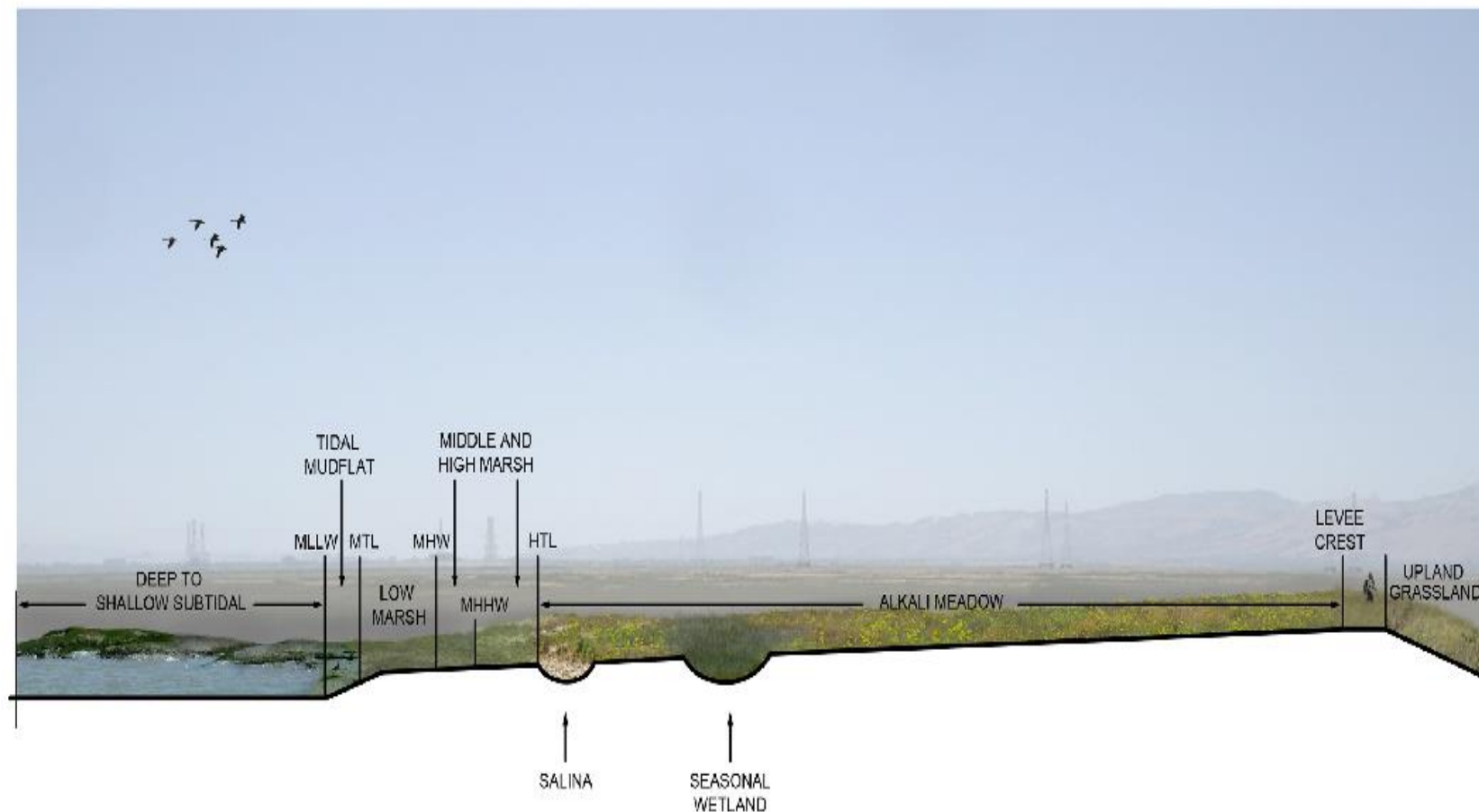
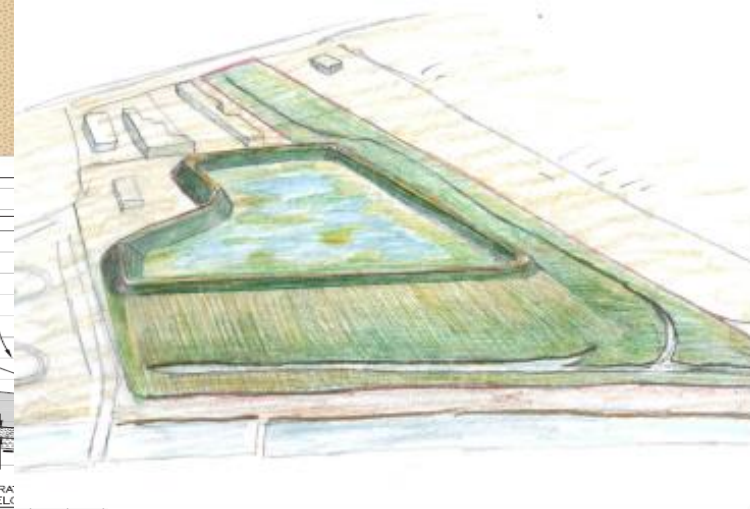
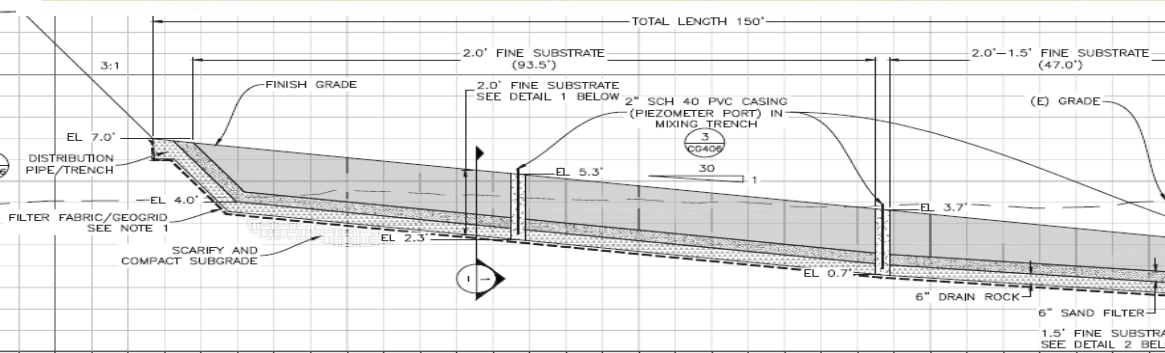
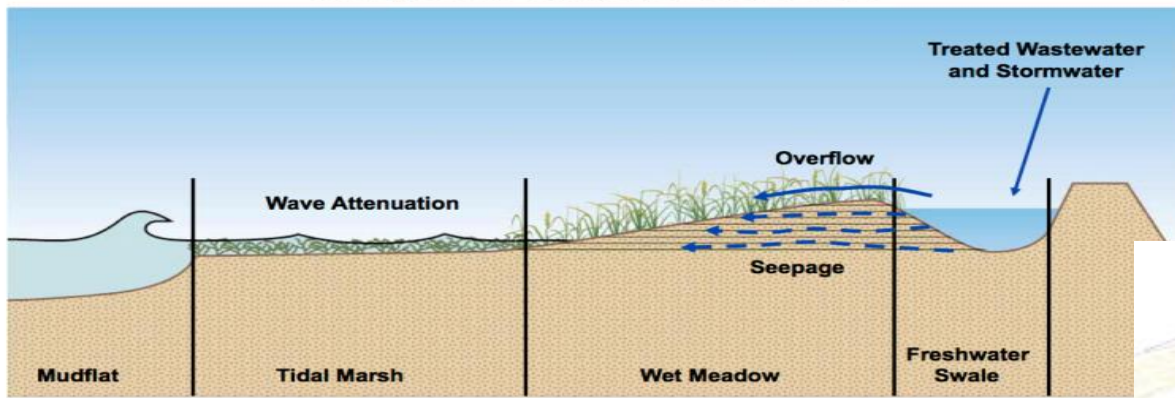


FIGURE 11



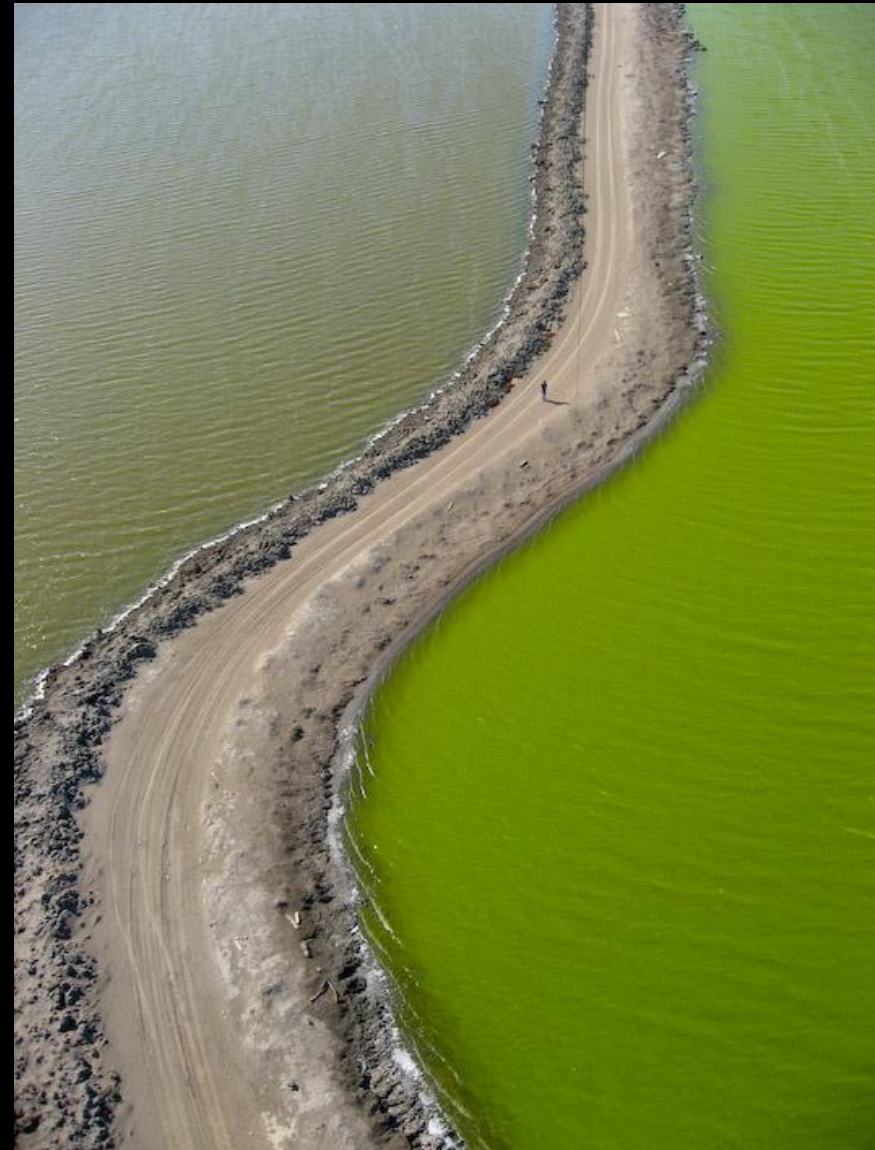
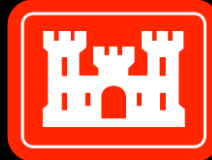
Sonoma Creek







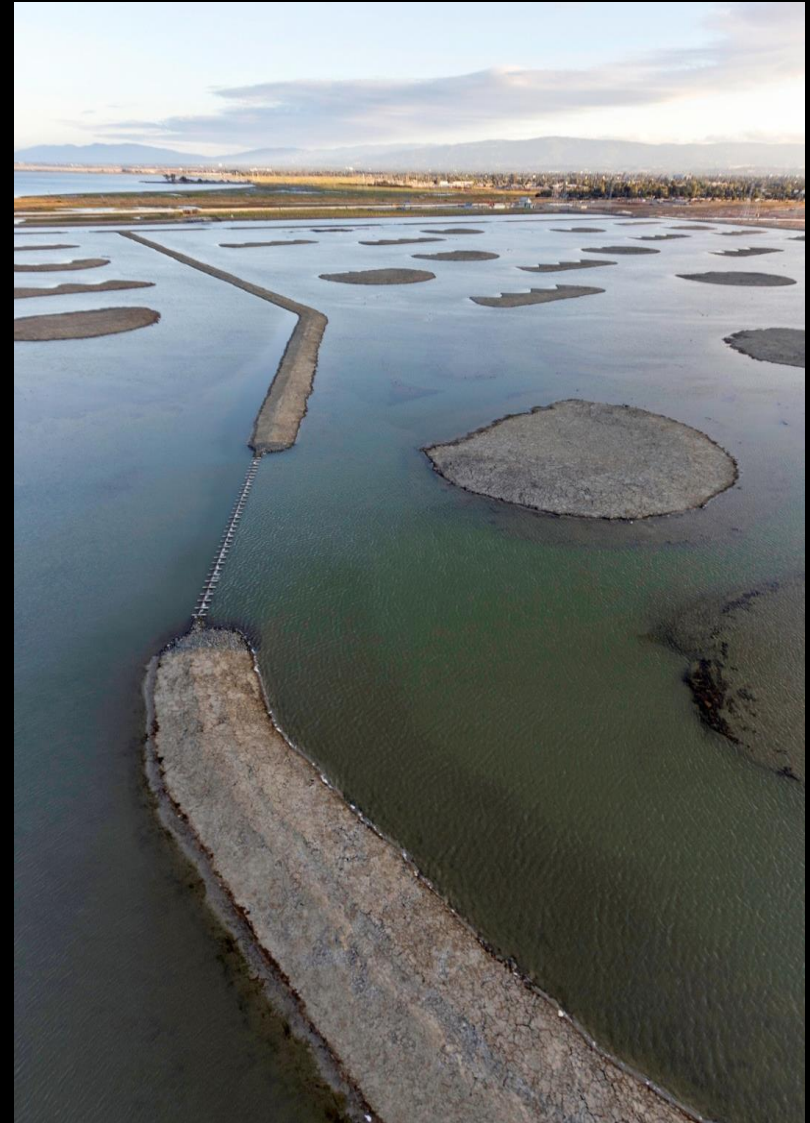
Partnerships



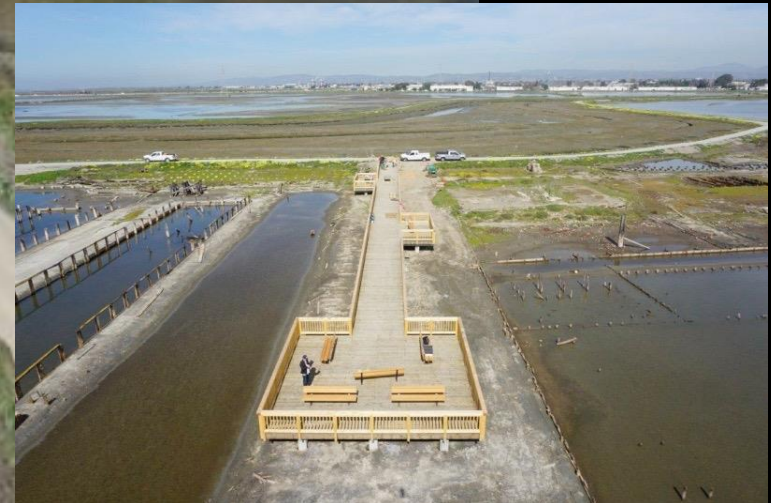


1,600 acres tidal restoration
1,440 acres muted tidal

710 acres reconfigured ponds



7 miles of new trails





LEAP, Nate Kauffman



South Bay Salt Pond Restoration Project

Restoring the Wild Heart of the South Bay

John Bourgeois

California State Coastal Conservancy

John.Bourgeois@scc.ca.gov

408/314-8859

www.southbayrestoration.org

Like us on Facebook or Follow us on Twitter

facebook



Name:
South Bay Salt
Pond Restoration
Project